

37' Tollycraft Sedan Bridge



37' Tollycraft Sedan Bridge

- Year: 1978
- Galley Down Layout
- \$Thousands in Recent Premium Upgrades
- Professionally Maintained
- Extremely Clean!

\$ 59,000 CAD

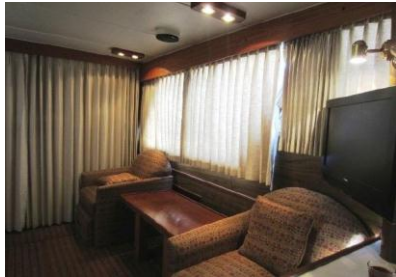
This desirable, solid Pacific Northwest flybridge sedan has been professionally maintained (both mechanically & cosmetically) with many recent mechanical, interior & system upgrades by her meticulous owners. This vessel shows exceptionally well and is ready to cruise. Call to arrange your viewing appointment...you will not be disappointed.



37' Tollycraft Sedan Bridge



37' Tollycraft Sedan Bridge



37' Tollycraft Sedan Bridge



Specs

Builder: Tollycraft
Designer: Ed Monk

Dimensions

LOA: 43 ft 0 in
Beam: 13 ft 2 in
Maximum Draft: 3 ft 0 in
Displacement: 22000 lbs
Bridge Clearance: 12 ft 6 in

Engines

Total Power: 330
Cruising Speed: 8 - 17 Knots

Engine 1:

Engine Brand: Twin Mercruiser
Engine Model: 7.4L FWC
Engine Type: Inboard
Engine/Fuel Type: Gas/Petrol
Location: Starboard
Drive Type: Direct Drive
Engine(s) Total Power: 340 HP

Tanks

Fresh Water Tanks: (140 Gallons)
Fuel Tanks: (300 Gallons)
Holding Tanks: (40 Gallons)

Accommodation

Number of double berths: 2
Number of cabins: 1
Number of heads: 1

Engine 2:

Engine Brand: Twin Mercruiser
Engine Model: 7.4L FWC
Engine Type: Inboard
Engine/Fuel Type: Gas/Petrol
Location: Port
Drive Type: Direct Drive
Engine(s) Total Power: 340 HP

Accommodations

Entry through double sliding glass doors from the cockpit to the wide entertainment-sized salon with a queen pull out sofa bed to starboard and table with two occasional chairs to port. In the forward salon, to port overlooking the open galley is a breakfast bar with two upholstered bar stools. The private master stateroom is forward with vee-berth and filler cushion, hanging locker and generous storage cabinets. Ensuite access to head with separate shower stall.

- Electric thermostatically controlled heating.
- Buss heating system (from engines).
- Reverse cycle heat & ac
- Custom teak-trimmed overhead halogen lighting, dimmer switch controlled (upgraded in 2008)
- Designer carpet, soft furnishings, upholstery and custom-built matching chairs w/storage ottomans (upgraded in 2008)



37' Tollycraft Sedan Bridge



Galley

- Double stainless steel sinks w/upgraded Moen faucet.
- Princess 3 burner stove/oven.
- Norcold AC/DC refrigerator/freezer (New Spring '08).
- Samsung microwave oven.
- Substantial cupboard storage and counter space.

Electronics

Flybridge helm:

- Standard Horizon 10" GPS chartplotter
- FURUNO GPS Navigator GP50.
- Interphase DC-500.
- ICOM IC-M302 VHF radio.
- Pioneer speakers.

Lower Helm:

- FURUNO NAVNET 10.4" GPS Chartplotter (New Spring '08)
- Garmin Fishfinder 250C colour sounder.
- Motorola TRITON II VHF radio.
- KVH M3 satellite TV
- 22" LCD TV in salon
- Kenwood stereo w/6 disc cd changer.
- Boston Acoustic speakers.

Electrical

- Upgraded Westerbeke Genset (new in 2011).
- 12 volt DC panel with switching breakers.
- 120 volt AC panel with switching breakers.
- 6 - golf cart batteries for house system.
- 2 - engine start batteries.
- 30 amp shore power cord, 50'.

Ground Tackle & Deck Hardware

- Stainless steel rail mount fender holders.
- Matching fenders and dock lines.
- Snap in cockpit carpeting.
- Fiberglass storage box in cockpit with upholstered bench seat.



37' Tollycraft Sedan Bridge



Dinghy

- 9' Livingston dinghy.
- Johnson 4HP outboard.
- Weaver snap davits on swim step.
- Warn electric winch mounted to transom for dinghy lift.

Additional

- Full cockpit slope canvas winter cover.
- Windshield sun screen and blackout covers.
- Navy Sunbrella flybridge bimini (1 inch SS frame)complete with wrap around windshield panels

For further information, please contact our brokers at Van Isle Marina



Allan Mactier
amactier@vanislemarina.com
Office: 250.656.1138
Cell: 250.213. 8547



Greg Andrew
gandrew@vanislemarina.com
Office: 250.656.1138
Cell: 250.812.1489

Disclaimer

The Company offers the details of this vessel in good faith but cannot guarantee or warrant the accuracy of this information nor warrant the condition of the vessel. A buyer should instruct his agents, or his surveyors, to investigate such details as the buyer desires validated. This vessel is offered subject to prior sale, price change, or withdrawal without notice.

