

37' Carver 370 Voyager



1997

Well equipped for year round, comfortable all-weather cruising including:

- Twin Cummins 6 cylinder "B" series 250hp (approximately 1700hrs)
- Trolling valve including wiring & mounting hardware for Scotty electric downriggers
- Espar forced air diesel furnace
- Recently upgraded Raymarine C120w (flybridge helm) & C90w (lower helm), gps/chartplotter, sounder, radar & autopilot, Satellite TV
- Xantrex 2500w inverter w/upgraded battery banks
- Spacious, bright galley space w/10 cubic ft refrigerator/freezer, microwave oven, propane stove & oven
- Comfortable accommodations in two staterooms, convertible double berth in salon, full size head w/separate shower stall
- Newer Titan RIB tender w/Mercury 15hp outboard on ss davit system
- Custom cockpit awning with integrated stainless kayak mount, plus many more redeeming features.

Annual Spring Maintenance Schedule Completed April 14th, 2014:

Hauled, Pressure Washed, Props Polished, Hull & New Antifoul Bottom Coat Applied, Zinc Anodes Replaced, Gelcoat Completely Waxed & Polished, Engines Serviced - Ready for the 2014 Cruising Season.

Vessel located at owner's slip. Please call to arrange for your personal tour of this exceptional Carver!



Waxed, polished & bottom painted April 14, 2014

37' Carver 370 Voyager



Stern view



Props, cleaned, polished & zinc anodes replaced



Main cabin forward view



Starboard salon



Port salon convertible sofa bed



AC/DC electrical panel, stereo & inverter control panel

37' Carver 370 Voyager



Salon view looking aft



Dinette to starboard with forward bench converts to



Lower helm bench seat



Lower helm dash console

37' Carver 370 Voyager



Galley located portside, forward



Port side guest stateroom with upper/lower berths



Lower companionway to staterooms & head



Upper single berth



Lower single berth

37' Carver 370 Voyager



Lower berth converted to double bed



Master stateroom forward with walkaround queen bed



Port side master stateroom



Starboard side master stateroom



Head

37' Carver 370 Voyager



Large separate shower stall



Flybridge forward view



Two helm seats



Flybridge dash console



Upgraded Raymarine C120w 12" display, autopilot &

37' Carver 370 Voyager



Port side flybridge seating



Port side flybridge sunpad lounge



Port Cummins 6BTA 250hp diesel



Starboard Cummins 6BTA 250hp diesel



10' Titan RIB tender w/Mercury 15hp



Manufacturer Provided Image

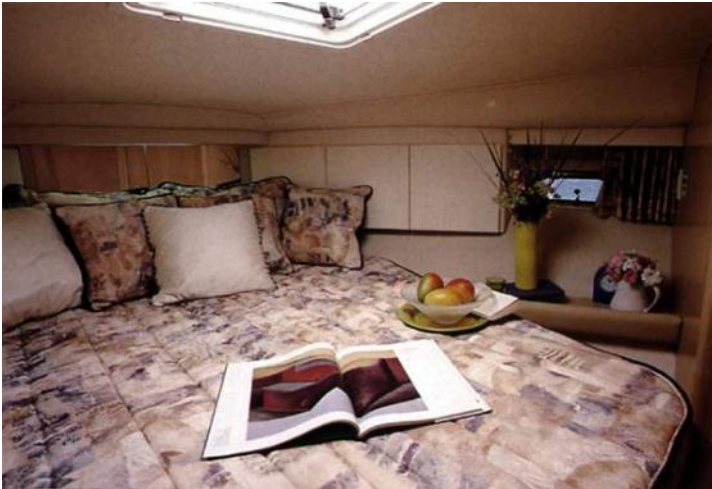
37' Carver 370 Voyager



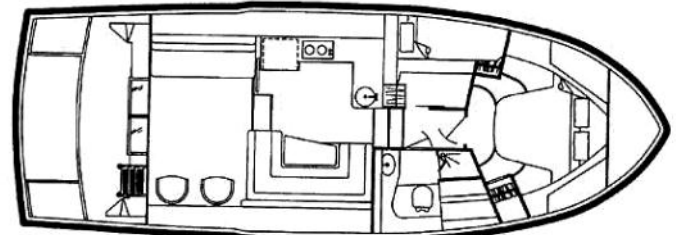
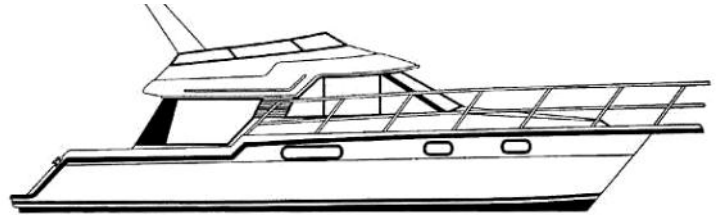
Manufacturer Provided Image



Manufacturer Provided Image



Manufacturer Provided Image



Manufacturer Provided Image

Specs

Hull Shape: Deep Vee

Dimensions

LOA: 40 ft 0 in
Beam: 13 ft 3 in
Maximum Draft: 3 ft 8 in
Bridge Clearance: 12 ft 7 in
Headroom: 6 ft 5 in
Dry Weight: 20350 lbs

Tanks

Fresh Water Tanks: (83 Gallons)
Fuel Tanks: (297 Gallons)
Holding Tanks: (35 Gallons)

Accommodations

Number of single berths: 2
Number of double berths: 2
Number of cabins: 2
Number of heads: 1

Outside Equipment/Extras

Electric windlass

37' Carver 370 Voyager



Engines

Engine 1:

Engine Brand: Cummins

Year Built: 1997

Engine Model: 6BTA

Engine Type: Inboard

Engine/Fuel Type: Diesel

Location: Starboard

Engine(s) Total Power: 250 HP

Engine 2:

Engine Brand: Cummins

Year Built: 1997

Engine Model: 6BTA

Engine Type: Inboard

Engine/Fuel Type: Diesel

Location: Port

Engine(s) Total Power: 250 HP

Manufacturer Provided Description

The Carver 370 Voyager features all-weather cruising with an available lower station helm. She's built for topside enjoyment as well, with an extra-large cockpit and spacious fly bridge, which also offers an L-shaped port sun lounge, seating six with built-in storage. A Euro-style transom features a swim platform with stow-away ladder and mounting pads for davits. Easy access from cockpit to the cabin is provided via a large sliding door with screen. Large windows provide enhanced visibility and light in the bright, open cabin. The 370 Voyager has carefully chosen designer-coordinated colors and fabrics throughout the interior. There's room for an array of amenities here, including a fully equipped galley with full-size refrigerator and freezer, two-burner electric stove with oven, and lots of storage. The dinette offers excellent seated visibility and converts easily to extra sleeping space with a double berth. A salon sofa with double incliners brings the sleeping accommodations to seven. For overnight comfort, the master stateroom features an oversized, island double berth and ample, convenient storage. The mid-cabin offers a double berth and optional upper bunk. A separate stall shower is featured in the conveniently located head compartment. The 370 features a standard long-range fuel capacity, which significantly increases cruising possibilities. Carver Aft Cabin or Cockpit Motor Yachts feature significant amenities, including luxurious master staterooms, with large inner-spring berths and private head compartments complete with showers and vanities. Spacious aft decks with hard tops and enclosures provide superior protection from the sun and weather. Spacious salons offer plenty of comfortable seating as well as entertainment centers. Fully equipped galleys are laid out to make meal or snack preparation easy and enjoyable. Carver builds seven motor yachts featuring the aft cabin design, more than any other boat builders. Four Carver Voyager models are available, each offering superb living accommodations and cruising amenities and ranging in size from 28 feet to the 53-foot 530 Voyager Pilothouse. A combination of contemporary styling, plus the unique cruising and entertainment advantages of a fly bridge, set the Carver Voyager apart. The optional lower helm station creates an all-weather cruiser. With extended-range fuel tanks, the Voyager can cruise farther. Living aboard a Carver yacht is very comfortable and easy, especially aboard a single-level, open-concept cabin configuration. The 350

37' Carver 370 Voyager



Mariner, one of Carver's best-selling yachts, features a unique cabin design and congenial fly bridge. The large cockpit is ready for play and the spacious salon can easily entertain. With over four decades of leadership designing motor yachts that offer superior comfort and livability, Carver is one of the most experienced builders in the industry.

The progressive exterior styling emphasizes clean lines, attractive, Euro-styled curves and, in many cases, frameless windows which provide greater cabin light and an attractive appearance.

Comfort never takes a back seat on a Carver fly bridge. The bridges feature extremely comfortable seating, and many of them also have convertible sun lounges, ergonomic control consoles with back-lighted full instrumentation and plenty of functional storage built in. The beautiful upholstery and distinctive selection of Carver interior colors and fabrics create a sophisticated understatement of elegance throughout the interior environments. In the larger motor yachts, seating areas are finished in luxurious UltraLeather, while quality designer fabrics, in select colors and patterns, are featured in the other crafts. To maintain the highest standards of manufacturing, all the furniture, upholstery and draperies are made in Carver's own shops. Master staterooms feature the extra comfort of inner-spring mattresses. Carver's smaller cruisers also include generous sleeping space that is functionally designed for comfort and privacy. The fully equipped, efficient galleys feature practical layouts with plenty of cabinet space and drawer storage, plus necessities like large stoves and refrigerators. Chef-friendly solid-surface counter tops and sinks with solid brass faucets and fixtures add touches of style and functionality. In every aspect of manufacturing, Carver Yachts only uses the highest-quality components and materials, from companies like: Cummins Marine (diesel propulsion systems), G & T Industries (fabrics and upholstery), Maxwell Winches (winch systems), Reichhold Chemicals (resin systems), Seaward Products (Princess Appliances) and Springs Industries (UltraLeather HP). The advanced design and technology of these companies' products adds extra value to every Carver yacht. An international network of dealers ensures worldwide availability of Carver yachts and cruisers.

Allan Mactier, CPYB
amactier@vanislemarina.com

Greg Andrew, CPYB
gandrew@vanislemarina.com



www.vanislemarina.com

2320 Harbour Road, Sidney, BC | 250-656-1138

Disclaimer: The Company offers the details of this vessel in good faith but cannot guarantee or warrant the accuracy of this information nor warrant the condition of the vessel. A buyer should instruct his agents, or his surveyors, to investigate such details as the buyer desires validated. This vessel is offered subject to prior sale, price change, or withdrawal without notice.

