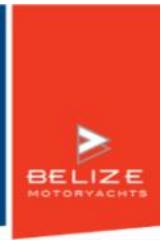


44' Tollycraft Aft Cabin MY



1989

One of Tollycraft's most successful, best selling models, the 44 Aft Cabin Cockpit Motor Yacht offers an unlimited versatility and attractive exterior lines. The unique Ed Monk Jr. "Quadra Lift" hull design provides great stability and economical performance (8.5 knots at 1750 rpm - fuel consumption = 5.8 gallons/hour or 22 litres/hour which achieves 1.46 nautical miles per gallon of fuel used) resulting in an extremely comfortable motor yacht for cruising the Pacific Northwest. Interlude has been diligently maintained and serviced both mechanically and cosmetically.



\$ 109,000 CAD

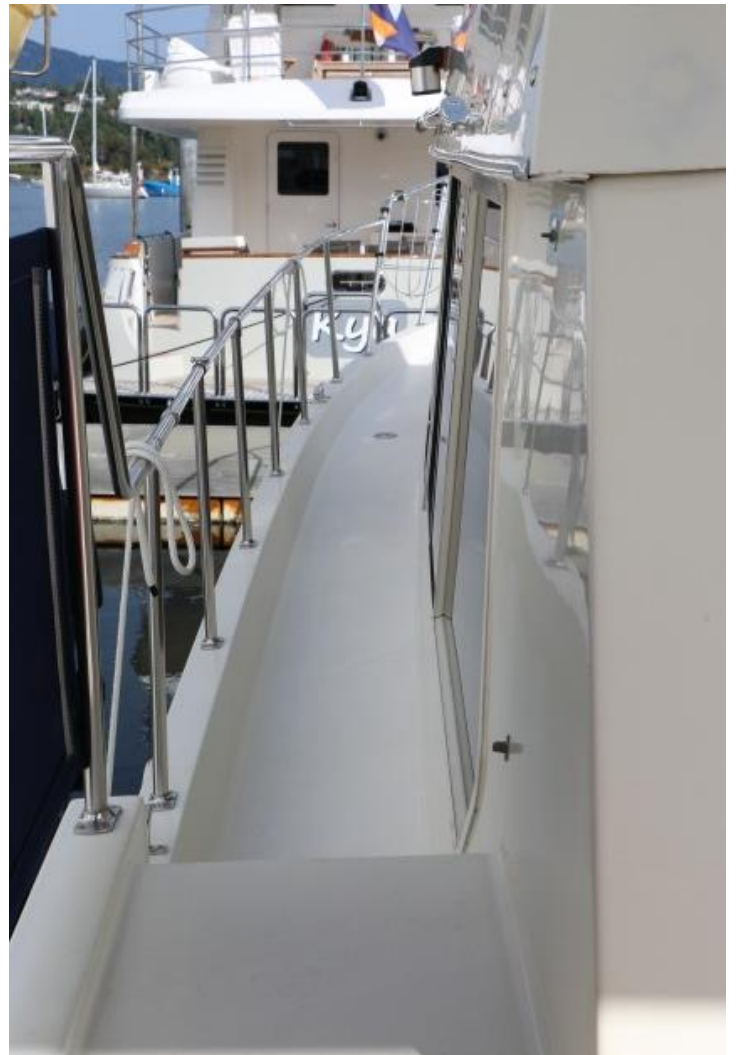
44' Tollycraft Aft Cabin MY



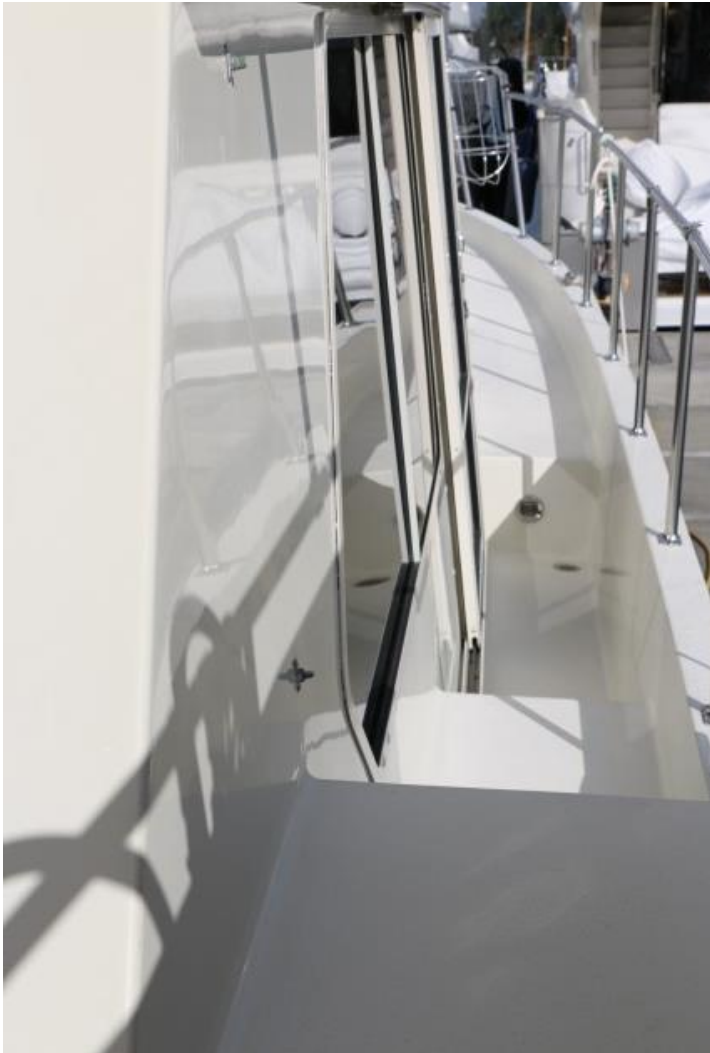
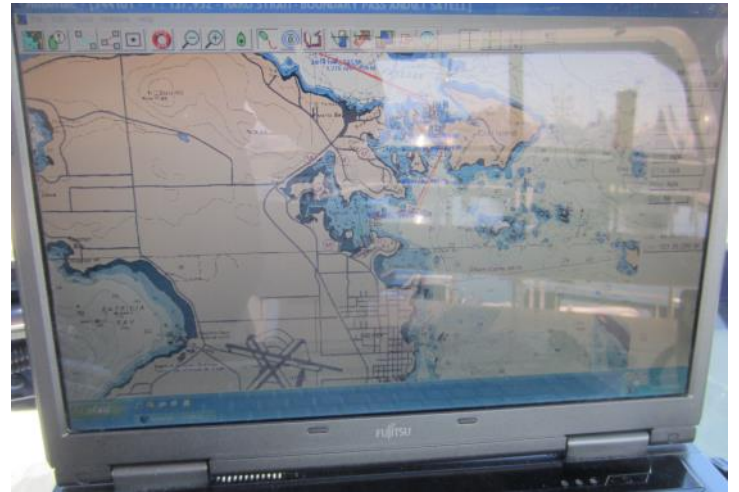
44' Tollycraft Aft Cabin MY



44' Tollycraft Aft Cabin MY



44' Tollycraft Aft Cabin MY



44' Tollycraft Aft Cabin MY



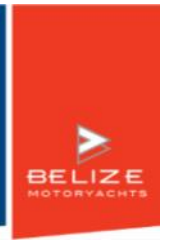
44' Tollycraft Aft Cabin MY



44' Tollycraft Aft Cabin MY



44' Tollycraft Aft Cabin MY



44' Tollycraft Aft Cabin MY



44' Tollycraft Aft Cabin MY



Specs

Builder: Tollycraft
Designer: Ed Monk Jr
Flag of Registry: Canada
Hull Shape: Semi-Displacement

Dimensions

LOA: 49 ft 0 in
Beam: 14 ft 8 in
Maximum Draft: 3 ft 6 in
Dry Weight: 28000 lbs

Engines

Total Power: 680 HP
Engine 1:
Engine Brand: Mercruiser
Engine Model: 7.4L 454 CID FWC
Engine Type: Inboard
Engine/Fuel Type: Gas/Petrol
Location: Starboard
Engine Hours: 1452
Drive Type: Direct Drive
Engine Power: 340 HP
Engine 2:
Engine Brand: Mercruiser
Engine Model: 7.4L 454 CID FWC
Engine Type: Inboard
Engine/Fuel Type: Gas/Petrol
Location: Port
Engine Hours: 1452
Drive Type: Direct Drive
Engine Power: 340 HP

Tanks

Fresh Water Tanks: (140 Gallons)
Fuel Tanks: (400 Gallons)
Holding Tanks: (40 Gallons)

Accommodations

Number of double berths: 4
Number of cabins: 2
Number of heads: 2

Outside Equipment/Extras

Electric windlass

Accommodations

This comfortable boat sleeps up to 8 people. Two stateroom layout with bright main salon living space providing an L-shaped ultimate leather settee with convertible double sofa bed, two matching bar stools at breakfast bar overlooking the large galley down with dinette opposing the galley that converts into a double berth. Spacious full beam Master stateroom has queen island berth with ensuite head and separate shower/tub. Guest stateroom forward has vee berths with head and separate shower stall.

Galley

Very bright and functional workspace. Window at eye level over the sink with another large window above that. Natural light floods in from the windshield over the galley and breakfast bar.

•Norcold 8 cubic foot upright refriger-

erator & freezer

- Princess 3 burner electric stove
- Sunbeam microwave oven
- U-line ice maker
- water heater
- Water system
- Double Stainless steel sinks

Electronics

Flybridge Helm:
Raytheon R21XX raster scan radar
Raymarine ST70 autopilot (new in 2012)
Fujitsu laptop computer with No-beltec Navigation software
Raymarine Autohelm Series TRI DA-TA ST60+ (depth/speed/trip)
Raytheon VHF radio
Lower Helm:
Raymarine Autohelm Series TRI DA-TA ST60 (depth/speed/trip)
JRC VHF radio

Electrical

Electrical panel divided into 2 x 30 amps for flexibility
2 x 30 amp shore power cables with a 50 amp adapter
Kohler 7.5kw Genset with underwater exhaust (extremely quiet running!)
2500W Inverter/Charger with remote control monitoring panel (New in 2009)
Trojan T125 house batteries (new in 2014)

44' Tollycraft Aft Cabin MY



Deck Hardware & Ground Tackle

New Maxwell electric windlass (New in 2008) with controls on deck and bridge

Danforth anchor with 250 feet of chain

Salt water washdown at the bow

Stainless steel transom davits with electric winches

11'5" Aquapro aluminum RIB center console yacht tender with Yamaha 25hp 4 stroke

Hot & cold fresh water washdown in cockpit

Domestic water intake & TV cable connection in cockpit

Extremely large lazarette storage are below cockpit deck

Canvas

Full Bimini Bridge Enclosure with SeaView glass insert including windshield wiper & washer

Canvas side railing panels at aft deck to protect from wind and contain small children and/or pets

Canvas inserts to cockpit stairs and both side decks to contain small children and/or pets

Full canvas cover for the dinghy and

motor

Extra Parts Included

Water pump, fuel pump, macerator, main engine raw water pump, spare rebuilt 2500W inverter/charger, all systems manuals, maintenance records & fuel consumption records

Annual Maintenance

Bottom Paint, Zincs Replaced, Props & Shafts Cleaned & Polished (Completed May 2014)

Topsides waxed & polished September 2014

Exclusions

Owners personal items stowed onboard excluded in vessel sale (Detailed list provided to purchasers)

Allan Mactier, CPYB

amactier@vanislemarina.com

Greg Andrew, CPYB

gandrew@vanislemarina.com

Cameron Williams

cwilliams@vanislemarina.com

www.vanislemarina.com

2320 Harbour Road, Sidney, BC | 250-656-1138

