

# 44' Tollycraft Aft Cabin Motor Yacht



1989

One of Tollycraft's most successful, best selling models, the 44 Aft Cabin Cockpit Motor Yacht offers an unlimited versatility and attractive exterior lines. The unique Ed Monk Jr. "Quadra Lift" hull design provides great stability and economical performance (8.5 knots at 1750 rpm - fuel consumption = 5.8 gallons/hour or 22 litres/hour which achieves 1.46 nautical miles per gallon of fuel used) resulting in an extremely comfortable motor yacht for cruising the Pacific Northwest. Interlude has been diligently maintained and serviced both mechanically and cosmetically.



**Sale Pending**



# 44' Tollycraft Aft Cabin Motor Yacht



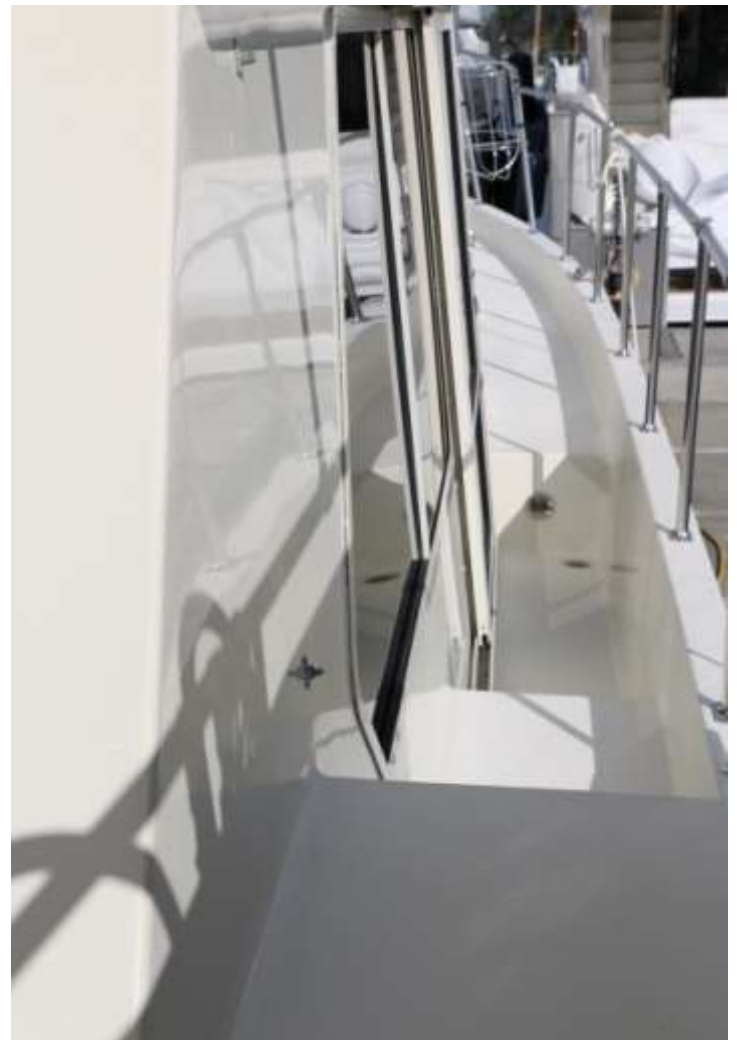
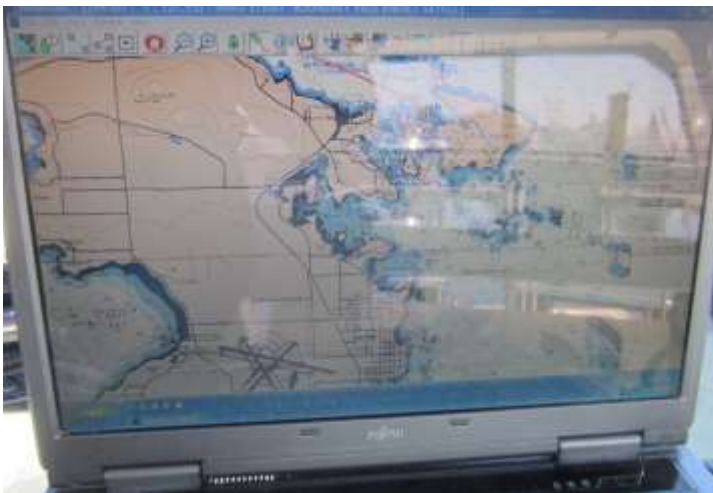
# 44' Tollycraft Aft Cabin Motor Yacht



# 44' Tollycraft Aft Cabin Motor Yacht



# 44' Tollycraft Aft Cabin Motor Yacht



# 44' Tollycraft Aft Cabin Motor Yacht



# 44' Tollycraft Aft Cabin Motor Yacht



# 44' Tollycraft Aft Cabin Motor Yacht





# 44' Tollycraft Aft Cabin Motor Yacht



# 44' Tollycraft Aft Cabin Motor Yacht



# 44' Tollycraft Aft Cabin Motor Yacht



## Specs

Builder: Tollycraft  
Designer: Ed Monk Jr  
Flag of Registry: Canada  
Hull Shape: Semi-Displacement  
Total Power: 680 HP

## Dimensions

LOA: 49 ft 0 in  
Beam: 14 ft 8 in  
Maximum Draft: 3 ft 6 in  
Dry Weight: 28000 lbs

## Tanks

Fresh Water Tanks: (140 Gallons)  
Fuel Tanks: (400 Gallons)  
Holding Tanks: (40 Gallons)

## Accommodations

Number of double berths: 4  
Number of cabins: 2  
Number of heads: 2

## Engine 1:

Engine Brand: Mercruiser  
Engine Model: 7.4L 454 CID FWC  
Engine Type: Inboard  
Engine/Fuel Type: Gas/Petrol  
Location: Starboard  
Engine Hours: 1452  
Drive Type: Direct Drive  
Engine Power: 340 HP

## Engine 2:

Engine Brand: Mercruiser  
Engine Model: 7.4L 454 CID FWC  
Engine Type: Inboard  
Engine/Fuel Type: Gas/Petrol  
Location: Port  
Engine Hours: 1452  
Drive Type: Direct Drive  
Engine Power: 340 HP

## Outside Equipment/Extras

Electric windlass

## Accommodations

This comfortable boat sleeps up to 8 people. Two stateroom layout with bright main salon living space providing an L-shaped ultaleather settee with convertible double sofa bed, two matching bar stools at breakfast bar overlooking the large galley down with dinette opposing the galley that converts into a double berth. Spacious full beam Master stateroom has queen island berth with ensuite head and separate shower/tub. Guest stateroom forward has vee berths with head and separate shower stall.

# 44' Tollycraft Aft Cabin Motor Yacht



## Galley

Very bright and functional workspace. Window at eye level over the sink with another large window above that. Natural light floods in from the windshield over the galley and breakfast bar.

- Norcold 8 cubic foot upright refrigerator & freezer
- Princess 3 burner electric stove
- Sunbeam microwave oven
- U-line ice maker
- water heater
- Water system
- Double Stainless steel sinks

## Electronics

### Flybridge Helm:

- Raytheon R21XX raster scan radar
- Raymarine ST70 autopilot (new in 2012)
- Fujitsu laptop computer with Nobeltec Navigation software
- Raymarine Autohelm Series TRI DATA ST60+ (depth/speed/trip)
- Raytheon VHF radio

### Lower Helm:

- Raymarine Autohelm Series TRI DATA ST60 (depth/speed/trip)
- JRC VHF radio

## Electrical

- Electrical panel divided into 2 x 30 amps for flexibility
- 2 x 30 amp shore power cables with a 50 amp adapter
- Kohler 7.5kw Genset with underwater exhaust (extremely quiet running!)
- 2500W Inverter/Charger with remote control monitoring panel (New in 2009)
- Trojan T125 house batteries (new in 2014)

## Deck Hardware & Ground Tackle

- New Maxwell electric windlass (New in 2008) with controls on deck and bridge
- Danforth anchor with 250 feet of chain
- Salt water washdown at the bow
- Stainless steel transom davits with electric winches
- 11'5" Aquapro aluminum RIB center console yacht tender with Yamaha 25hp 4 stroke
- Hot & cold fresh water washdown in cockpit
- Domestic water intake & TV cable connection in cockpit
- Extremely large lazarette storage are below cockpit deck



# 44' Tollycraft Aft Cabin Motor Yacht



## Canvas

Full Bimini Bridge Enclosure with SeaView glass insert including windshield wiper & washer  
Canvas side railing panels at aft deck to protect from wind and contain small children and/or pets  
Canvas inserts to cockpit stairs and both side decks to contain small children and/or pets  
Full canvas cover for the dinghy and motor

## Extra Parts Included

Water pump, fuel pump, macerator, main engine raw water pump, spare rebuilt 2500W inverter/charger, all systems manuals, maintenance records & fuel consumption records

## Annual Maintenance

Bottom Paint, Zincs Replaced, Props & Shafts Cleaned & Polished (Completed May 2014)

Topsides waxed & polished September 2014

## Exclusions

Owners personal items stowed onboard excluded in vessel sale (Detailed list provided to purchasers)

# 44' Tollycraft Aft Cabin Motor Yacht



**Greg Andrew, CPYB**  
gandrew@vanislemarina.com

**Cameron Williams**  
cwilliams@vanislemarina.com

**Tom Campbell**  
tcampbell@vanislemarina.com

**[www.vanislemarina.com](http://www.vanislemarina.com)**  
2320 Harbour Road, Sidney, BC | 250-656-1138

*Disclaimer: The Company offers the details of this vessel in good faith but cannot guarantee or warrant the accuracy of this information nor warrant the condition of the vessel. A buyer should instruct his agents, or his surveyors, to investigate such details as the buyer desires validated. This vessel is offered subject to prior sale, price change, or withdrawal without notice.*

